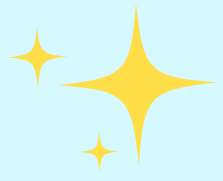


Tinkergarten Lantern Walk Song Lyrics

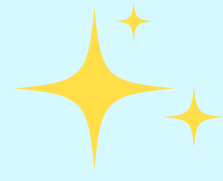


**Let us not curse the
darkness. Let us
kindle little lights.**

—Dada Vaswani



Lantern Verse

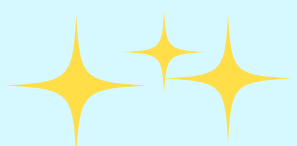


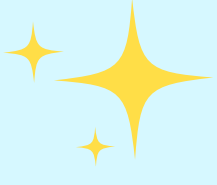
Sung to the
Come to *Tinkergarten* song



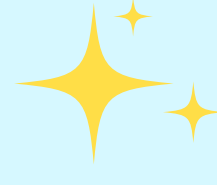
Listen

Lantern, lantern burning bright,
Guiding our way through the night.
Lantern, lantern burning bright,
Come to Tinkergarten!





Together With Our Lights

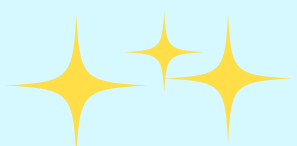


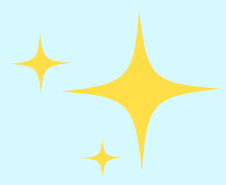
Sung to *Twinkle Twinkle,
Little Star*



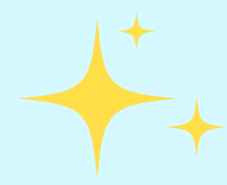
Listen

We go walking in the park,
Welcoming the autumn dark.
Even though the stars we see
Light the sky for you and me,
All together with our lights,
We make magic of the night!
[REPEAT!]





I Go Outside With My Lantern



Martinmas Song —
“I Go Outside With My Lantern”



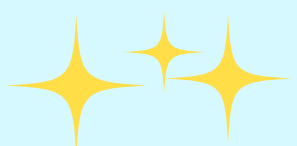
Listen

I go outside with my lantern,
My lantern goes with me.
Above the stars are shining bright,
Down here on Earth shine we.

The cock does crow, the cat meows,
la bimmel, la bammel, la boom.
‘Neath heaven’s dome till we go home,
la bimmel, la bammel, la boom.

I go outside with my lantern,
My lantern goes with me
Above the stars are shining bright,
Down here on Earth shine we.

So shine your light through the still dark night,
la bimmel, la bammel, la boom
‘Neath heaven’s dome till we go home,
la bimmel, la bammel, la boom.



A Land Acknowledgement

As part of a new season or special event at Tinkergarten, we take time to acknowledge that we are grateful for the land on which we gather and grateful to those who have come before us —those who have cared for this land. We also acknowledge that the land is ancestral home to specific, Native people(s).

During your event, your Leader may share what they know about the Native people or peoples to whom the land on which you'll walk is an ancestral home. We do this in an effort to remember and celebrate those people's past, present and future.

[Visit our blog](#) to find out more about how to include Native history in your outdoor experiences.

